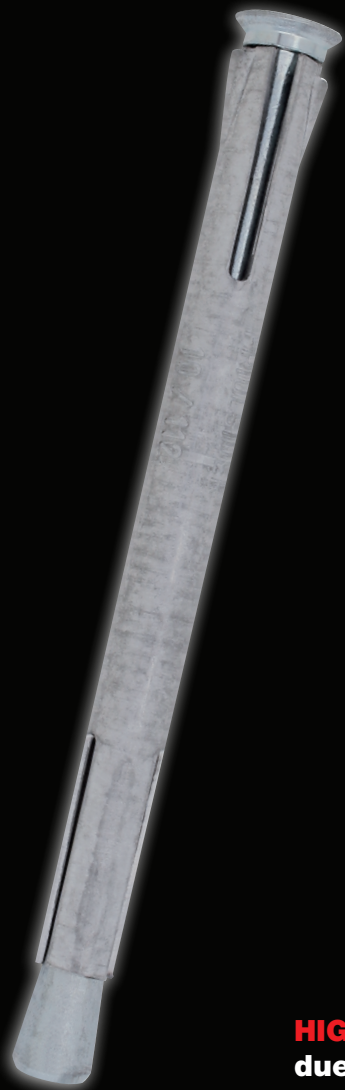


**ripple** *friulsider*

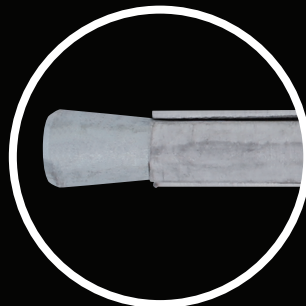
# TMF

Long metal sleeve frame anchor

**Through Fixing**

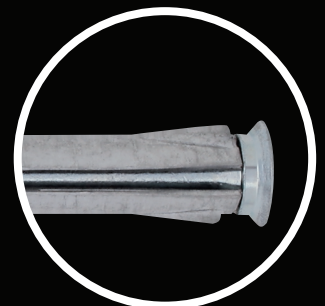


**PREASSEMBLED THROUGH ANCHOR**  
in sheet steel with a wide range of sizes.



**HIGH PERFORMANCE**  
Ensured by the plug's shape and by the expansion cone granting stability of the fixing over time.

**HIGH RESISTANCE TO CORROSION**  
due to the hot dip galvanised plating.



**friulsider**

since 1966

CERTIFICATION OF QUALITY MANAGEMENT SYSTEM  
ISO 9001 Cert. n° 1085

CERTIFICATION OF ENVIRONMENTAL MANAGEMENT SYSTEM  
ISO 14001 Cert. n° 0050A

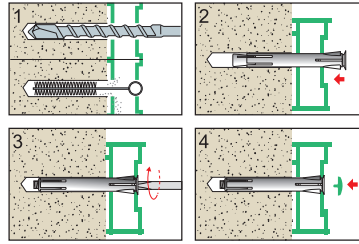


# TMF

## Long metal sleeve frame anchor

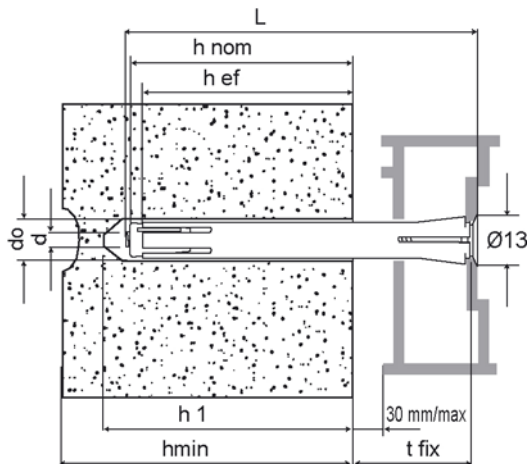
- concrete
- solid brick
- honeycomb brick
- cell like clay brick
- light weight honeycomb brick
- hollow dense aggregate block
- hollow light aggregate block
- aerated concrete
- solid stone

White zinc plated  
cylindrical head screw  
Pozidrive recess



Product Description	Code	Plug Ø x L	Box Qty
TMF 10/82	77202b10072	10x82	50
TMF 10/102	77202b10092	10x102	50
TMF 10/122	77202b10112	10x122	50
TMF 10/142	77202b10132	10x142	50
TMF 10/162	77202b10152	10x162	50
TMF 10/192	77202b10182	10x192	50

## DATI TECNICI - TECHNICAL DATA



- tfix = spessore max fissabile / fixture thickness
- do = diametro foro / hole diameter
- h1 = profondità minima foro / minimum hole depth
- hef = profondità minima di ancoraggio / minimum depth of anchorage
- hnom = profondità minima di posa / nominal embedment depth
- hmin = spessore minimo supporto / minimum support thickness
- d = diametro vite / screw diameter
- L = lunghezza ancorante / anchor length

tipo / type do x L	tfix [mm]	h1 [mm]	hnom [mm]	hef [mm]	hmin [mm]	d	cod.
Ø10x82	22	75	60	50	100	M6	77202b10072
Ø10x102	42						77202b10092
Ø10x122	62						77202b10112
Ø10x142	82						77202b10132
Ø10x162	102						77202b10152
Ø10x192	132						77202b10182

## Ripple Construction Products Pvt Ltd

Corp Office: 303 & 403, Royal Arcadia, S.R. Nagar, Hyderabad - 500 038, India

Tel: +91 40 4004 0707 Fax: +91 40 4004 0686

Email: marketing@rippleindia.in | www.rippleindia.in