



**ripple**<sup>TM</sup>  
India



# Mini Catalogue

Drilling & Anchor Fastening



**Ripple Construction Products Pvt Ltd is incorporated in April 2012 with an objective of :**

**"Providing world class, superior quality Products & Services to our Customers enhancing their Business more efficiently & effectively"**



## Our Purpose

**Our Core Passion is your brighter future**



**Our**

We continuously put efforts on our improvements for providing a total customer satisfaction



**Core Passion**

We are passionate to build leadership capacity and manage the business growth based on our Culture



**is your**

We work closely with clients to understand their needs and develop course of action using effective & efficient practices



**brighter future**

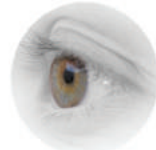
We work to enhance our client's performance, productivity and profitability through our value added products & services.

## Our Mission

- To be genuine in offering our services to the clients helping them scale up in their business
- To be the quality leaders in everything we do

## Our Vision

- To create value through offering superior quality & innovative solutions thereby achieve consistent, sustainable business results
- Our vision is to bring excellent practices in the industry by promoting Conservation of Energy, Efficiency & Water in our day to day business environment



## Our Belief In

**PEOPLE**

We strongly believe that our Ripple team are the most resourceful

**PASSION**

We have a passion for success

**PROGRESS**

We foster an environment where everyone has fairness, transparency, tools to grow & excel



## Our Values

- F** - **Fairness** in what we do
- I** - **Integrity** in everything we do
- R** - **Responsiveness** in assignments
- E** - **Excellence** in everything we do



## Dear Esteemed Customer,

Our Objective is to "Providing **world class, superior quality products & services** to its Customers enhancing their business more **efficiently & effectively**"

You see it everywhere. Renovations, rehabs and flips on projects in every neighbourhood. New infrastructure projects, commercial, residential buildings, landscaping and manufacturing industries etc the professionals are doing it all; making world class projects with an increased speed, quality and above all hip and trendy.

There is a surge in Quality of the Products supplied to the Construction Industry and enhance the pace of the Project and reliability in fastening area. Our customers are also demanding the best possible service that enhances the efficiency of their fast track projects. Anchor Fasteners used in Construction Industry play a vital role to meet the demands of the progress in each project.

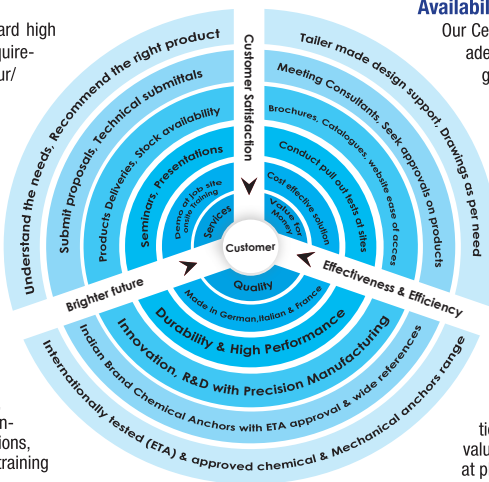
That is why we are sharing with you a well-kept secret. **Ripple Construction Products Pvt Ltd** brings you innovative, problem solving and high quality products to meet your stringent demands such as:

### Quality:

We bring you international standard high quality products to meet your requirements comparable & exceed your/client/consultant's expectations. We can conduct PULL OUT tests and issue test certificate based on our customer's requests at their jobsite for our Anchor installations.

### Service:

We offer services to our Customers Clients,- Consultants through visiting Jobsites, Understand the needs, recommend, Submit proposals, Brochures, Catalogues, seek consultant's approvals, demonstrations, seminars, presentations, On-site training to application team etc.



### Availability:

Our Central Warehouse at Hyderabad with adequate stocks maintained at our Regional Offices around the country to ensure the fastest possible delivery to our customers. Our constant and consistent replenishment of our stocks based on the increase in demand.

### Value for Money:

Our unique intangible benefits offered via our products & services gives a clear cutting edge. Though you may clearly recognize the differentiation in the price, there are many additional features which intern will add value to your purchase, design support at planning stage & execution stage.

**Ripple India Team** sincerely urge you to give us an opportunity to service your needs and prove our ability to be a preferred partner for Anchor Fasteners.

- For more information, please visit us at : <http://www.rippleindia.in>

**Ripple India Team**



### Ripple Construction Products Pvt Ltd

Corp Office: 303 & 403, Royal Arcadia, S.R. Nagar, Hyderabad - 500 038, India

Tel: +91 40 4004 0707 Fax: +91 40 4004 0686

Email: [marketing@rippleindia.in](mailto:marketing@rippleindia.in) | [www.rippleindia.in](http://www.rippleindia.in)



Whatsapp: +91 770 222 5500

## Experts in Fixing & Drilling Solutions

### Welcome To Ripple India

- Ripple India incorporated in April 2012 head quartered at Hyderabad, India with an objective of “**Providing World class superior Quality Products & Services** to its customers enhancing their business more efficiently & effectively”
- Ripple India with its presence across the Country in India having Registered Offices at **New Delhi, Lucknow, Kolkata, Bhubaneshwar, Hyderabad, Vizag, Chennai, Bengaluru & Mumbai** are ready to serve the needs of our esteemed customers with highly professional, well qualified and well trained team of Engineers in Sales, Marketing & Engineering Support.
- Our endeavour to bring the best **Quality Products** which meet the standards of Client's Needs as well provide **Value for Money** in longrun.



### Engineering support at Site

Demonstrations, On-Site Tests, Seminars, Specifications etc.,



### Softwares & Apps

Engineering Calculation Softwares, Apps, Technical Manuals



### After Sales Services

In-house Repair Services & Maintenance for Power Tools



### Chemical Anchor

1. R Fix : Pure Epoxy based Chemical Anchor
2. V Fix: Vinyl Ester based Chemical Anchor
3. P Fix: Polyester based Chemical Anchor
4. RTR: Ripple Threaded Rods of various sizes



### Mechanical Anchor

1. Heavy Duty Metal Anchors
2. Medium Duty Metal Anchors
3. Light Duty Plastic Anchors
4. Frame Fixing Anchors
5. Special Anchors
6. Foams & Sealants



### Electrical Power Tools

1. Corded Power Tools
2. Cordless Power Tools
3. Batteries & Chargers
4. Accessories
5. Test & Measurement Tools
6. Hand Tools



## SOLUTIONS TO YOUR FASTENING CHALLENGES MADE EASY

We have the right Products & Services to fulfill your needs



Prior to fixing and fastening, making an opening is very essential into various base materials. Electrical Power Tools such as Corded Power Tools, Cordless Power Tools in various ranges helps in Drilling in to concrete, Steel, Wood, Marble, Tiles, Granite, Gypsum, Plywood boards etc., **Milwaukee Electric Tool Corp.** is an industry-leading manufacturer and marketer of heavy-duty, portable electric power tools and accessories for professional users worldwide...Since its founding in 1924, **Milwaukee** Electric Tool has been an industry leader in power tool innovation...

# POWER TOOLS

- **MILWAUKEE** CORDED
- **MILWAUKEE** CORDLESS
- **RIPPLE** POWER TOOLS (**RPT**)





## Pistol Design SDS Plus Rotary Hammers



PFH 24 E	max 24 mm 2 mode Rotary Hammer
PFH 26	max 26 mm 2 mode Rotary Hammer
PH 26	max 26 mm 3 mode Rotary Hammer
PH 27	max 26 mm 3 mode Rotary Hammer
PH 28	max 28 mm 3 mode Rotary Hammer

## Rotary Drills



HDE 10 RQX	725W SINGLE SPEED ROTARY DRILL
HDE 13 RQX	950W SINGLE SPEED ROTARY DRILL
HD2E 13 R	705W 2-SPEED ROTARY DRILL
HDE 13 RQD	825W SINGLE SPEED ROTARY DRILL
B2E 16 RLD	900W 2-SPEED ROTARY DRILL
B4-32	4-SPEED ROTARY DRILL

## L Shaped SDS Plus Rotary Hammer Drills



PLH 20	max 20 mm 2 mode Rotary Hammer
PLH 28	max 28 mm 3 mode Rotary Hammer
PLH 32 XE	max 32 mm 3 mode Rotary Hammer
PCE 3	3 Kg SDS Plus Chipping Hammer
PH 30	max 30 mm 3 mode Rotary Hammer

## Percussion Drills



PD2E 22 R	850W 2-SPEED PERCUSSION DRILL
PD2E 24 R	1020W 2-SPEED PERCUSSION DRILL
PD2E 24 RS	1010 W 2-SPEED PERCUSSION DRILL
PD2E 24 RST	1200 W 2-SPEED PERCUSSION DRILL
SB 2-35 D	1010W 2-SPEED PERCUSSION DRILL
PD 705	725 W PERCUSSION DRILL

## SDS Max Combi Hammer Drills



K 540 S	max 40 mm 5 Kg Class Combi Hammer
K 545 S	max 45 mm 5 Kg Class Combi Hammer
K 750 S	max 50 mm 7 Kg Class Combi Hammer
K 950 S	max 50 mm 10 Kg Class Combi Hammer

## IMPACT WRENCH / WALL CHASERS



IPW5E 520 RQ	3/4" DRIVE IMPACT WRENCH
IPW5E 400 RQ	1/2" DRIVE IMPACT WRENCH
WCE 30	1500W 125mm (30mm DOC) wall chaser
WCS 45	1900W 150mm (45 mm DOC) wall chaser
WCE 65	2300W 230mm (65mm DOC) wall chaser

## SDS Max Electro - Pneumatic Breakers



K 500 ST	5 Kg Class Chiselling Hammer
K 500 S	5 Kg Class Chiselling Hammer
K 900 S	10 Kg Class Breaker

## Reciprocating Saws / Mitre Saws



MS 305 DB	12"305mm DUAL MITRE SAW
MS 216 SB	8 1/2"216mm MITRE SAW
CHS 355	2300W CHOPSAW
SSPE 1300 SX	1300W SAWZALL® Reciprocating Saw
SSPE 1300 RX	1300W 360 ROTATING HANDLE SAWZALL®
SSPE 1500 X	1500W SAWZALL® Reciprocating Saw

## Diamond Core Drilling Machines



DD3-152	max 152 mm 3 speed combi Core Drill
DCM2-250C	max 250 mm Diamond Core Drill
DCM2-350C	max 350 mm Diamond Core Drill
DR 152 T	Drill Stand for DD3 152
DR 250 TV	Drill Stand for DCM2-250C
DR 350 T	Drill Stand for DCM2-350C

## Jig Saws / Circular Saws



JS 120 X	HEAVY DUTY BODY GRIP JIGSAW
FSPE 110 X	HEAVY DUTY BODY GRIP JIGSAW
JSPE 135 TX	HEAVY DUTY TOP HANDLE JIGSAW
SCS 65 Q	190MM CIRCULAR SAW(65MM DOC)
MCS 66	DRY CUT METAL CIRCULAR SAW
CS 60	184MM CIRCULAR SAW (61 MM DOC)

## Diamond Core Drilling - Accessories



WT 10	10 L Capacity Water Tank
VP 6	Vacuum pump
Adaptor	1 1/4 inch to 1 1/2 inch
Rings	Water Collection Rings
Spacer Block	Upto 50 mm between drill rig & motor
Spanners	1 3/8 inch, 32 mm, 41 mm open end



## Magnetic Drills / Screw Drivers



MDE 41	Magnetic drill Press with electro magnet
MDP 41	Magnetic drill Press - Permanent magnet
MD 4-85	Magnetic drilling Press
TKSE 2500 Q	Tech gun for self drilling screws
DWSE 4000 Q	Dry wall Screwdriver

## Angle Grinders / Band Saw



AS2-250 ELC	25 L Dust Extractor ( Vacuum Cleaner)
AP 12 E	1200W POLISHER
AP 14-2 200 E	1450W High Torque Automobile Polisher
AG 10-125	1000W ANGLE GRINDER
AG 22-180/230	2200W ANGLE GRINDER
BS 125	DEEP CUT BAND SAW

## One Key Fuel Bluetooth Tools



M18 ONEDD	DRILL DRIVER
M18 ONEPD	PERCUSSION DRILL
M18 ONEID	1/4 inch Hex Impact wrench
M18 ONEWF12	1/2" impact wrench with friction ring
M18 ONEWP12	1/2" impact wrench with pin detent

## SDS Plus Rotary Hammer Drills



M12 CH	max 13 mm brushless Rotary Hammer
M12 H	max 13 mm 2 mode Rotary Hammer
M18 CHX	max 26 mm 4 mode Rotary Hammer
M18 CHPX	max 28 mm 4 mode Rotary Hammer

## Magnetic Drilling Press



M18 FMPD	Milwaukee® designed and built brushless POWERSTATE™ motor provides corded drilling performance with strongest magnet holding force on 1/4" steel and 40 x 18 mm holes per battery charge
----------	--

## Rotary Drills



M12 BSD	12V Sub Compact 1 speed Drill Driver
M12 BDDX	12 V Sub Compact Drill-Removable Chuck
M12 BDD	12V Sub Compact DRILL DRIVER
C12 RAD	12V RIGHT ANGLE DRILL
M18 FDD	18V COMPACT DRILL DRIVER
M12 CDD	12V 2 SPEED COMPACT DRILL DRIVER

## Percussion Drills



M12 BPD	12V SUB COMPACT DRILL
M18 FPD	18V COMPACT PERCUSSION DRILL
M12 CPD	12V 2 SPEED COMPACT DRILL
M18 BPD/BDD	18V COMPACT HAMMER DRILL
M18 BLPD	18V BRUSHLESS DRILL

## Impact Wrenches



M18 CHIWF34	18V 3/4" high torque impact wrench
M12 BW 12	18V 1/2" compact impact wrench
M12 BW 12	12V 1/2" Sub compact impact wrench
M12 CW 12	12V 1/2" compact impact wrench
M12 CW 14	12V 1/4" compact impact wrench
M12 BW 38	12V 3/8" Sub compact impact wrench

## Impact Drills



M18 BID	18V SUB COMPACT IMPACT DRIVER
M12 CID	12V 1/4" HEX COMPACT IMPACT DRIVER
M12 IR	12V SUB COMPACT IMPACT RATCHET
M12 BID	12V SUB COMPACT IMPACT DRIVER

## Saws



M12CCS44	12V COMPACT CIRCULAR SAW
M18 CCS 55	18V CIRCULAR SAW
M18 CCS 66	18V CIRCULAR SAW
HD18 CS	18V HEAVY DUTY CIRCULAR SAW
HD18 MS	18V METAL SAW

## Saws



M12 CHZ	12V COMPACT HACKZALL™
M18 CSX	18V SAWZALL®
M18 BSX	18V HEAVY DUTY SAWZALL®
M18 CBS125	18V DEEP CUT BAND SAW
HD18 BS	18V HEAVY DUTY METAL BANDSAW
HD18 JS	18V HEAVY DUTY JIGSAW

## Angle Grinders



M18 CAG PD	18V 125 MM ANGLE GRINDER
HD 18 AG -115	18V HD 115 MM ANGLE GRINDER
M18 CAG	18V ANGLE GRINDER
M18 CAG XPDB	18V 115 MM BRAKING GRINDER

## MISCELLANEOUS



C12 WS	12V WALL SCANNER
M12 TI	12V THERMAL IMAGE CAMERA
C12 PC	12V COPPER PIPE CUTTER
M18 BMT	18V MULTI-TOOL
M18 SMS 216	18V HEAVY DUTY MITRE SAW
M18 VC	18V HD 7.5 L WET/DRY VACUUM

## CHARGERS & BATTERIES



M12-18 FC	M12,M18 Fast Charger
C12 C	M12 Charger
M18 B4	18V 4Ah Battery Pack
M18 B5	18V 5Ah Battery Pack
M12 B2	12V 2Ah Battery Pack

## WORLD'S FIRST 9Ah BATTERY



M18 B9 THE WORLD'S 1st & ONLY 18V High Demand™ 9.0Ah BATTERY. Take the power of performance into your own hands with M18™ 9.0Ah battery packs. Outlasting any other battery in the market with 9.0Ah power across over 85+ high performance M18™ cordless tools.

## 5 KG DRILLING & BREAKING HAMMER



M18 CHM - 902C  
The world's first 18 V Cordless 5 Kg Class SDS MAX Combination Hammer with an equal capacity of A/C Tool. The Tool has dual function both Rotary Hammer Drilling upto 40 mm dia in Concrete & minor chiseling function



## ► RAG 4 Ripple Angle Grinder 4 inch



### Specifications at a Glance

### RAG 4

Voltage	220 - 240 V
Frequency	50 Hz
Power input	900 W
No load speed	11000 RPM
Disc size dia	4 inch ( 100 mm )
Tool weight	2.1 Kg ( With Cord )

### KEY FEATURES

- Powerful 900 W motor designed for heavy duty applications of cutting and grinding tasks
- Compact design allows comfortable gripping
- Long endurance by high quality commutator and durable carbon brush
- Spindle lock for quick & easy change of accessories
- Spiral bevel gears provide less vibration, lower noise level and longer life span
- Safety guard ensures maximum user protection
- On & off slide switch for one hand control
- Optimized air vents for best cooling of the tool during operation



## ► RHD 26 Plus Ripple Hammer Drill 26 mm



### KEY FEATURES

- 3-in-1 switch for drill, hammer drill & hammer-only
- Variable speed 0-1150 RPM rotation only mode - for drilling in wood

### Specifications at a Glance

### RHD 26 PLUS

Rated voltage	230 V
Frequency	50 Hz
Rated power input	850 W
Impact energy	0 - 3 J
Impact rate at rated speed	0 - 5100 bpm
Rated speed	0 - 1150 rpm

### Weight ( with Cord )

2.8 kg

### Cord specification

H07RN-F 2 x 1mm Cord ( Length : 2 Meters )

### Cord pin

Euro Plug 2 Round Pin

### Length

420 mm

### Width

85 mm

### Height

220 mm

### Bit holder

SDS-plus

## ► **REB 650** Ripple Electric Blower



Specifications at a Glance	REB 650
Voltage	220 - 240 V
Frequency	50 Hz
Power input	650 W
No load speed	16000 RPM
Air volume	2.8 m³/min
Tool weight	2.1 Kg ( With Cord )

### KEY FEATURES

- Offers highest power-weight ratio amongst its class: 650 W at 2.1 Kg
- Offers combination of power of 650 W and airflow of  $\geq 2.8 \text{ m}^3/\text{min}$
- Easy to service and change carbon brush design
- Lock on button for constant on convenience
- 2 meter long cable

## ► **RCS 355** Ripple Chop Saw - 355 mm (14")



### KEY FEATURES

- Powerful 2600 W motor designed for heavy duty applications of metal cutting
- Long endurance by high quality commutator and durable carbon brush
- Spindle lock for quick & easy change of accessories
- Spiral bevel gears provide less vibration, lower noise level and longer life
- Safety guard ensures maximum user protection
- On & off Toggle switch for one hand control
- Optimized air vents for best cooling of the tool during operation

Specifications at a Glance	RCS 355
Rated voltage	220 - 240 V
Frequency	50 Hz
Rated power	2600 W
Disc size dia	355 mm ( 14" )
No load speed	3900 RPM
Standard accessories	CARBON BRUSH - 1 SET, SOCKET WRENCH - 1 PC, WHEEL INSTALLED WITH MACHINE

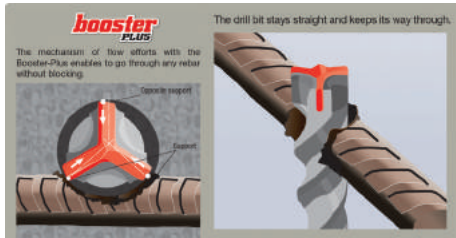
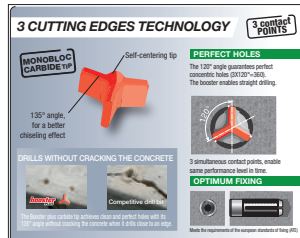
## CONCRETE DRILL BITS



**Available:**

Dia: 6 mm - 20 mm

Lengths: 110 mm - 610 mm



### KEY FEATURES

- Monobloc carbide tip with self-centering point.
- Tip angle 135°.
- 3 cutting edges.
- Square flute.
- Compatible SDS-plus shank.

### ADVANTAGES

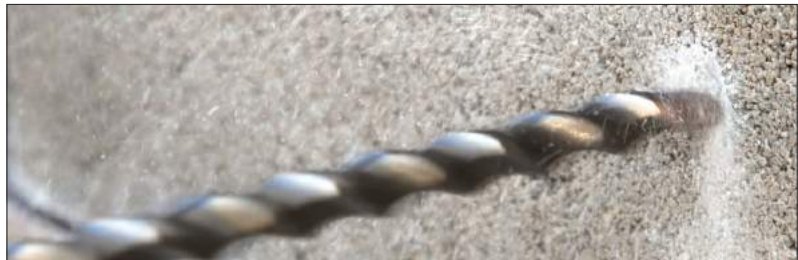
- The 3 cutting edges monobloc tip is the solution for all concrete drilling.
- The self-centering tip allows more precision.
- The tip design guarantees a concentric hole.
- The square flute accelerates dust extraction and improves the drill bit life time.



**Available:**

Dia: 6 mm - 30 mm

Lengths: 110 mm - 610 mm



### KEY FEATURES

- The new plate offers:
  - a centring tip with "Z" geometry
  - a wave profile with 3 effective supporting points
- The new helix offers 2 shape designs: half-round and square
- Compatible SDS-plus shank.

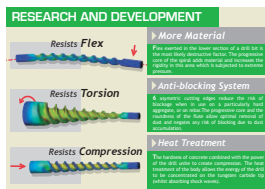
### ADVANTAGES

- The 3 plates pressure points concentrate hammer force in line with the drilling axis, thus increasing speed and destructive power.
- The power of the the centering tip power improves penetration into materials, the chiselling effect, and the drilling accuracy.
- The new helix geometry optimises the dust removal to guarantee speed, wear resistance, and service life.
- The new Twister is faster and maintains its performances over time.

## SDS MAX DRILL BITS



**Available:**  
Dia: 12mm - 45mm  
Lengths : 340mm - 1300mm



### KEY FEATURES

- 3 carbide tips with self-centering point.
- 6 cutting edges.
- Progressive flute.
- Compatible SDS-max shank.

### ADVANTAGES

- Guarantee of perfect round and calibrated hole.
- Longer life time.
- Avoid risk of blocking.

## Chisels

### CHISELS

#### Brick chasing chisel



**Applications**  
For jobs in sandstone, stone and brick. Ideal for varying the depth of the channel glides through and digging locations for distribution boxes and sockets without changing tools.



#### Pointed Chisel

Hex-shank



#### Flat chisel

**Applications**

- For each type of breaking works on concrete and stone.



#### Bush hammer Head



- Features**
- 16 Carbide Teeth
  - Monobloc



## SOLUTIONS TO YOUR FASTENING CHALLENGES MADE EASY

We have the right Products & Services to fulfill your needs

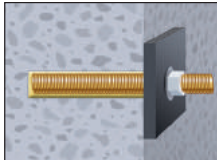
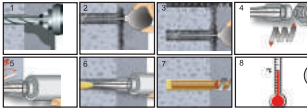


Continuously searching for innovative technological solutions, Friulsider constantly expands and evolves its product range, which now includes a total of 5800 articles, divided into anchors, roofing and cladding fixings, wood screws, nuts and bolts for metal.

Friulsider S.p.A, established in 1966, the production of all references, in steel and plastic, is carried out in-house, to ensure the quality of a “Made in Italy” product and to rapidly respond to all of the market demands, from construction to plant engineering, from mechanical industry to carpentry.

## Ripple R Fix™

Pure Epoxy Chemical Anchoring System



### Applications

- Rebar Fixings
- Rock Anchoring
- Heavy Duty Fixings
- Steel & wooden structural Beams & columns
- Cantilevers, Pipe supports
- Pumps, Machines
- Guard rails, Gates
- Heavy duty ladders
- Mechanical Equipments
- Percussion / core drilled holes
- Wet / water logged holes



### Features

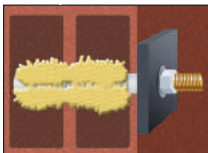
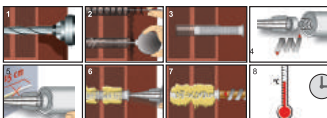
- Heavy Duty Pure Epoxy Chemical Anchor
- ETA Option 1 Certification
- F240 Fire Resistance Certification
- Pure Epoxy
- Suitability- Base Materials
- Styrene free Chemical
- Slow Curing

### Benefits

- High loads & safe Chemical anchoring
- Reliable fixing in cracked & un-cracked concrete
- Fire Resistant upto 240 minutes
- Excellent Bonding & low shrinkage
- Wide range of construction Base Material
- Low odour, High chemical resistance
- Can be used for Deep embedment

## Ripple V Fix™

Vinylester Chemical Anchoring System



### Applications

- Heavy Duty Fixings
- Steel & wooden structural Beams & columns
- Cantilevers, Pipe supports
- Pumps, Machines
- Guard rails, Gates
- Heavy duty ladders
- Mechanical Equipments
- Rebar Fixings
- Percussion / Rotary Hammer drilled holes



### Features

- Heavy Duty Vinylester Chemical Anchor
- ETA Option 1 Certification
- F120 Fire Resistance Certification
- Vinylester Based Chemical
- Suitability- Base Materials
- Styrene free Chemical

### Benefits

- High loads & safe Chemical anchoring
- Reliable fixing in cracked & un-cracked concrete
- Fire Resistant upto 120 minutes
- Excellent Bonding & low shrinkage
- Wide range of construction Base Material
- Low odour, High chemical resistance



## Ripple P Fix™

Polyester Styrene free Chemical Anchoring System



Polyester is a general purpose two-component chemical anchoring system that has been formulated to cure fast. It exhibits excellent bonding strength and is suitable for use in a variety of substrates, Including dry or wet concrete and solid or hollow masonry. Polyester has an European Technical Approval and is available in various colours(grey, white and stone) and with different gel times (standard and winter grades).

### Features

- Universal Polyester Chemical Anchor
- ETA Option 7 Certification
- Suitability- Base Materials
- Styrene free Chemical
- Mechanical properties
- Extended Gel time

### Benefits

- General purpose universal applications
- Reliable fixing in un-cracked concrete
- Wide range of construction Base Material
- Low odour, low shrinkage
- Excellent Bonding & High chemical resistance
- Suitable for tropical climatic conditions



## Ripple P Fix SG™

Polyester Styrene free Chemical Anchoring System



Polyester is a general purpose two-component chemical anchoring system that has been formulated to cure fast. It exhibits excellent bonding strength and is suitable for use in a variety of substrates, Including dry or wet concrete and solid or hollow masonry. Polyester has an European Technical Approval and is available in various colours(grey, white and stone) and with different gel times (standard and winter grades).

### Features

- Universal Polyester Chemical Anchor
- ETA Option 7 Certification
- Suitability- Base Materials
- Styrene free Chemical
- Mechanical properties
- Extended Gel time

### Benefits

- General purpose universal applications
- Reliable fixing in un-cracked concrete
- Wide range of construction Base Material
- Low odour, low shrinkage
- Excellent Bonding & High chemical resistance
- Suitable for tropical climatic conditions



## Dispenser for R Fix

Dispenser Gun for R Fix (Suitable for R Fix 385 ml & 585 ml)

Article No.  
30306



Static Mixer 18

Article No.  
16001



Extension Pipe to use with R Fix for deeper holes

Article No.  
16009



## Dispenser for V Fix & P Fix

Dispenser Gun for V Fix & P Fix (Suitable for V Fix & P Fix 410 ml Coaxial 10:1 ratio cartridge)



Article No.  
30205

Static Spiral Mixer 14WN ( For V Fix )



Article No.  
40123

Plastic perforated retention sleeve with centralising retention cone



Article No.  
63300

## Ripple Threaded Rods

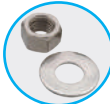
Steel Threaded Rods for Chemical Anchoring System



### STUD VERSION

Cone head and with or without chisel tipping at the bottom

**MAJOR AND MINOR DIA**  
Consistent pitch Diameter



### COMPATIBLE NUT & WASHER AVAILABLE IN VARIOUS GRADES

Grade 5.8 & 8.8  
Stainless steel A2 & A4

### Applications for use with Chemical Anchoring System

- Heavy Duty Fixings
- Steel & wooden structural Beams & columns
- Cantilevers, Pipe supports
- Insert plates
- Pumps, Machines
- Guard rails, Gates
- Heavy duty ladders
- Mechanical Equipments



Washer



Nut



**TO USE WITH  
CHEMICAL CAPSULES**

Friulside FRP

Threaded Anchor Rods are generally used in combination of Chemical Anchoring System either by Injected System or Chemical Capsule Anchors. Threaded Rods are also known in the industry as Anchor Rods, Stud Anchors and Threaded Anchor Rods. RTR is an acronym of **Ripple Threaded Rod**

Threaded Anchor Rods are generally fully threaded along their complete length for use with Injection System of Chemical Anchors. While some Threaded Anchor Rods are also having a Chisel tipped bottom end with Hex Head and a mark of the Depth of anchorage for use with Chemical Capsule Anchors.

The Threaded Rods used in conjunction with Chemical Anchoring System are subjected to Tensile, Shear, Bending Moments or Combination Loads. Also these anchors are generally subjected to a very high static and live loads hence the Grade of the Steel plays a vital role in usage. Various grades of steel like 4.6, 5.8, 8.8, 9.8, and 10.9 which are manufactured with the Carbon Steel material whose mechanical properties meet or exceed the requirements set forth in the relevant harmonized standards. The two-digit nomenclature is not used to describe individual steel grades and only applies to metric fasteners defined under ISO 965 (as well as derived standards).

### The designation system is based on two numbers e.g. 8.8

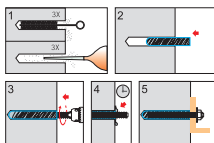
- The first number is the tensile strength of the bolt material (N/mm<sup>2</sup>)/100.
- The second number is = 1/100 (the ratio of the Proof (or Yield) stress.

The Anchorage strength of the threaded rod in combination with chemical anchor depends upon the grade of steel (Ultimate Tensile Strength), the bond strength & embedment (anchorage) depth.

Our Standard RTR Grades 5.8 & 8.8 comes with a minimum of 5 microns White Zinc Plating (WZP). Hot Dip Galvanization (HDG) of minimum 45 microns can be supplied upon specific requirement.

## FRP

Chemical fixing vinyl ester - Rotary percussion capsule



### Features

- Vinyl ester Chemical Capsule
- ETA 11-0155 Option 7 Certification
- Vinyl Ester Chemical Anchor
- Pre Dosed chemical components
- Styrene free Chemical
- Total Reliability



### Benefits

- High loads & safe Chemical anchoring
- Reliable fixing in un-cracked concrete
- Compatibility to Parent Concrete
- No wastage or no excess quantity
- Low odour, High chemical resistance
- Reduced edge and spacing distances

### Available:

Dia : 8 mm - 30 mm  
Lengths : 25 mm - 220 mm



### Applications

- Steel structures
- Dynamic Loads
- Machinery Foundations
- Barriers
- Railing & fencing
- Column base plates
- Column - Girder connections
- Heavy duty ladders



## HEAVY DUTY ANCHORS

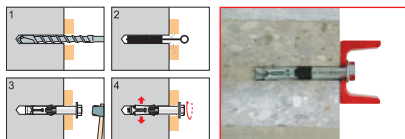
**ripple** friulsider

### ATS Evo

Heavy Duty Safety Anchor

#### Available:

Dia : 10 mm - 24 mm  
Lengths : 100 mm - 350 mm



#### Features

- Heavy Duty Safety Mechanical Anchor
- ETA Option 1 Certification
- F120 Fire Resistance Certification
- The coupling of the cone and body
- Single piece three segments expansion
- Special bush shape plastic collapsible sleeve
- 8.8 grade steel body

#### Applications

- Heavy Duty Fixings
- Steel & wooden structural Beams/columns
- Cantilevers, Pipe supports
- Pumps, Machines
- Guard rails, Gates
- Heavy duty ladders
- Mechanical Equipments

#### Benefits

- High shear loads & safe anchoring
- Reliable fixing in cracked & un-cracked concrete
- Fire Resistant upto 120 minutes
- Optimal expansion is guaranteed
- Excellent keying & friction
- Prevents rotation & slipping in the hole while applying torque
- High Tensile Strength

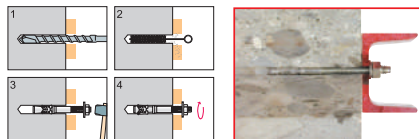


### FM-753® CRACK

Heavy Duty Wedge Anchor for Cracked Concrete

#### Available:

Dia : 8 mm - 16 mm  
Lengths : 68 mm - 220 mm



#### Features

- Steel Monolithic Body
- Unique Cone containing System
- Three Segment Grips
- Option 1 Approval
- Correct installation in Critical Conditions
- F120 Certification
- CE Certified

#### Applications

- Hand Rails, Guard Rails
- Facade Brackets & Clamps
- Pipe Supports, Channels
- Warehousing Racks
- Elevators, Escalators
- Columns & Beams Fixing
- Stadium Seat Fastening
- Steel & Wood Constructions

#### Benefits

- Greater Shear Resistance
- No Risk of Cone Detachment
- Guaranteed Anti Rotation
- Reliable even in Cracked Concrete
- Reduced Edge & Spacing Distance

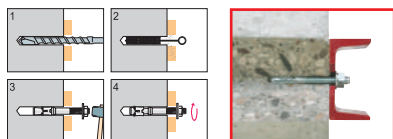


### FM-753®

Heavy Duty Wedge Anchor for Un-Cracked Concrete

#### Available:

Dia : 6 mm - 24 mm  
Lengths : 45 mm - 335 mm



#### Features

- Heavy Duty Anchor bolt for through fixings
- ETA Option 7 Certification
- Certified for 1000 hours in salt spray test
- Cold Forged Anchor Body
- Six gripping dents for adhesion with hole walls
- Stainless Steel Clip with Innovative Design

#### Applications

- Hand Rails, Guard Rails
- Facade Brackets & Clamps
- Pipe Supports, Channels
- Warehousing Racks
- Elevators, Escalators
- Columns & Beams Fixing

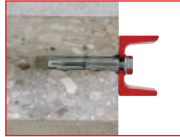
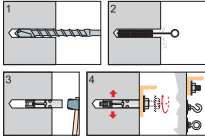
#### Benefits

- Wide range of Applications
- Reliable fixing in ( Un-cracked concrete )
- Can be used in Corrosive Environments
- High Resistance Ductile
- Prevents the anchor from rotating
- Uniform distribution in the Hole



## World Anchor

Medium Duty Wedge Anchor



### Features

- Medium Duty Anchor bolt for through fixings
- For Un-cracked Concrete
- Cold Forged Anchor Body
- Six gripping dents for adhesion with hole walls
- Steel Clip with Innovative Adhesion
- Hole Diameter & Anchor Diameter is the same
- Increased thickness of three expander segments

### Available:

Dia : 6 mm - 20 mm

Lengths : 65 mm - 220 mm

### Applications

- Hand Rails, Guard Rails
- Facade Brackets & Clamps
- Pipe Supports, Channels
- Warehousing Racks
- Elevators, Escalators
- Columns & Beams Fixing
- Consoles
- Cable Trays, Conduits
- Gates & Grills
- Mechanical Equipments
- Stadium Seat Fastening
- Steel & Wood Constructions

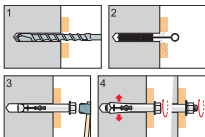


### Benefits

- Wide range of Applications
- Reliable fixing
- High Resistance Ductile
- Prevents the anchor from rotating
- Uniform distribution in the Hole
- Same Diameter drill bit can be used
- Friction & Keying Effect

## TSA-PATTEN

Metal Sleeve Anchor



### Features

- Ready to use
- Universal applications
- Shallow drilling depth

### Benefits

- Fully Assembled
- Through Fixing
- Depth of embedment

### Available:

Dia : 8 mm - 16 mm

Lengths : 40 mm - 150 mm

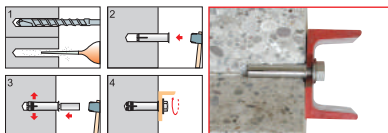
### Applications

- Medium duty steel constructions
- Profiles
- Radiators
- Signs
- Satellite Dish
- Shutters
- Angle Iron
- Stadium seating
- Wall plates
- Porches
- Garage Doors
- Cable trays
- Hand rails and supports
- Pipe lines and ventilations



### TAP

Rimmed / Rimless Hammerset Anchor



### Features

- Rimmed Lip
- Metric internal thread
- Standard setting tools
- Depth of embedment
- Flush with base material

### Benefits

- Prevents slipping into the drilled hole
- Standard Screws & threaded rods
- Prevents damage of internal thread
- Shallow drilling depth
- Minimises external interference

### Available:

Dia : 6 mm - 16 mm

Lengths : 25 mm - 65 mm

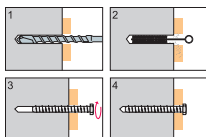
### Applications

- Sprinkler systems
- Gratings
- Scaffolding Props
- HVAC Fixings
- Core drilling machines
- False ceiling
- Cable Trays
- Raised floorings
- Medium Duty Steel constructions
- Wooden batons
- Suspended ceiling
- Electrical services
- Hand rails and supports
- Pipe lines and ventilations



### FM-CLR

Hex Head screw for Structural Fixings



### Features

- High shear loads
- No plug required
- Diameter vs loads
- Edge distance
- Spacing distance
- Re-usable
- Drill diameter

### Benefits

- Safe anchoring in concrete
- Direct installation
- High loading capacity
- Low due to keying principle
- Correct functioning with reduce spacing
- Can remove and reuse
- 2mm less than anchor diameter

### Available:

Dia : 10 mm - 14 mm

Lengths : 60 mm - 150 mm

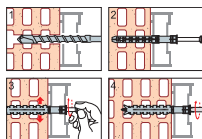
### Applications

- Electrical sector
- Facades
- Fixing machinery - production lines
- Hydraulics sector
- Metal carpentry
- Safety systems
- Scaffolding and shuttering
- Structural fixings
- Warehouse logistics
- Wood sector



## FM-X5®

Multi-expansion long Anchor



### Available:

Dia : 8 mm - 10 mm  
Lengths : 80 mm - 230 mm



### Applications

- All facade applications
- Stone cladding clamps
- Door & Window frames
- Kitchen cabinets
- Safety grills & railings
- HVAC applications



### Features

- Maximum versatility
- High quality nylon
- Low torque needed during expansion
- Multi expansion
- F90 certification
- CE certified
- Innovative, variable geometry

### Benefits

- Tested in wide range of base materials
- Ultra flexible
- Can also be fixed by hand
- Excellent keying & friction
- Fire resistant upto 90 minutes
- Guaranteed safety
- Optimal expansion is guaranteed preventing rotation & slipping in the hole

## TUP4

Long Nylon Through Anchor



### Available:

Dia : 8 mm - 12 mm  
Lengths : 80 mm - 240 mm

### Applications

- Building restoration
- D.I.Y.
- Facades
- Framework
- Metal carpentry



### FEATURES

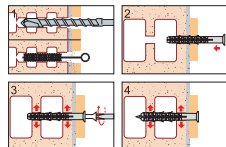
- Maximum versatility
- High quality nylon

### ADVANTAGES

- Tested in wide range of base materials
- Excellent keying & friction
- Guaranteed safety
- Optimal expansion is guaranteed preventing rotation & slipping in the hole

## TUP3

Long nylon 3 wing plug



### FEATURES

- Maximum versatility
- High quality nylon

### Available:

Dia : 8 mm - 10 mm  
Lengths : 80 mm - 160 mm

### Applications

- D.I.Y.
- Facades
- Framework
- Metal carpentry



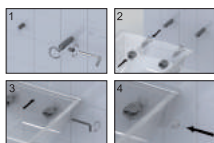
### ADVANTAGES

- Tested in wide range of base materials
- Excellent keying & friction



## FM-DREAM

Wall hung WC and bidet fixing



### Applications

- D.I.Y.
- Hydraulics sector

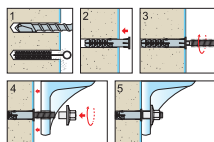


- UNIVERSAL: one version for all types of wall hung sanitaryware
- FLEXIBLE: completely adaptable to the dimensions and tolerances of different types of sanitaryware

## FLB

### Available:

Dia : 8 mm - 10 mm  
Lengths : 100 mm - 140 mm



### Applications

- Wash basin

### Features

- Preserves the integrity
- Excellent performance
- Wide range
- Total reliability

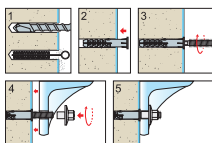
### Benefits

- FLB preserves the integrity of the sanitary ware
- Nylon bush prevents contact between the metal stud screw, nut & the sanitary ware preventing pressure
- Performance of the plug on the base material is excellence
- Excellent Keying & Friction
- Excellent performance
- Washbasin and bidet wall fixing



## FL

Washbasin and bidet wall fixing



### Available:

Dia : 8 mm - 10 mm  
Lengths : 110 mm - 180 mm

### Applications

- D.I.Y.
- Hydraulics sector

### Features

- Preserves the integrity
- Excellent performance
- Wide range
- Total reliability

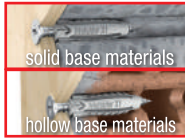
### Benefits

- FL preserves the integrity of the sanitary ware
- Nylon bush prevents contact between the metal stud screw, nut & the sanitary ware preventing pressure
- Performance of the plug on the base material is excellence
- Excellent Keying & Friction
- Excellent performance
- Washbasin and bidet wall fixing



## X1 EVO

The Absolute Anchor



**Available:**

Dia : 5 mm - 14 mm  
Lengths : 25 mm - 70 mm

### Applications

- Cable Ducts
- Window gratings
- Switch boards



### Features

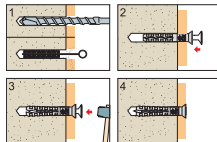
- It works 100% with all the screws
- It works perfectly both on solid and hollow base material
- Ideal for tiled walls

### Benefits

- Absolute Anchor
- An anchor for every base material
- Dynamic geometry with 4 expanding sector

## TSS/TBB

Countersunk pre-assembled nylon plug



**Available:**

Dia : 5 mm - 10 mm  
Lengths : 30 mm - 160 mm



### Applications

- Facades
- Framework
- Dry/Plasterboard system
- Metal Roofing



### Features

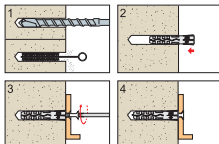
- Preassembled plug
- High quality Nylon
- Easy Installation
- CE Certified

### Benefits

- Its through fixing anchor
- Its Removable fixing anchor due to the shape of the nail screw

## TU

Nylon / Polypropylene Plug



**Available:**

Dia : 4 mm - 16 mm  
Lengths : 30 mm - 100 mm

### Applications

- Building restoration
- D.I.Y.
- Electrical sector
- Framework
- Hydraulics sector
- Metal roofing
- Safety systems
- Scaffolding and shuttering
- Warehouse logistics



### Features

- Excellent pull out resistance due to the material
- Controlled Expansion
- No rotation during installation due to the external wings

## SOLUTIONS TO YOUR FASTENING CHALLENGES MADE EASY

We have the right Products & Services to fulfill your needs



An opening made in the base material requires to be closed to prevent any passage of smoke, fumes, toxic gases, water etc., Various kinds of repair mortars, grouts, crack injection systems, sealants, foams and fire prevention system are employed to ensure proper sealing of the opening made. high quality foams, sealants and firestop products in addition to the construction chemicals are selected based on applications, base material, statutory requirements and to meet the specifications with our International approved products

## PUR Polyurethane foams

**PUR WINDOWS** Professional use polyurethane foam - WINDOW FRAMES



### For window frames:-

- High acoustic insulation: 60 db (EN ISO 771-1),
- High thermal insulation: 0.036 W/mk
- Max elasticity even when hardened
- High dilatation resistance
- B2 Self-extinguishing
- High level of resistance to fire, heat and smoke
- High yield - upto 45 ltrs freely foamed

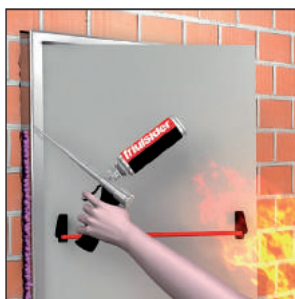


Contents 750 ml

**PUR REI** Professional use polyurethane foam - FIRE RETARDANT



Contents 750 ml



B1

For the Insulation of Firebreak Doors and Windows

Excellent resistance to fire

Fire, heat and smoke barrier

High yield - upto 45 ltrs freely foamed

## S25 Neutral - fire retardant silicone

High resistance to fire, high temperatures and smoke  
Suitable for sealing  
glass, ceramic, plastic, concrete, bricks, metal, aluminium



Professional

EN 13501-1 E

## S35 Acrylic - fire retardant

High resistance to fire, high temperatures and smoke  
Sealing of fireproof doors  
Sealing for porous construction materials

Suitable for sealing : concrete, mortar, bricks, plasterboard, wood, ceramic



Professional

DIN 4102 - B1

## SERVICES



### Engineering Support

Our Technical Engineering Team are well qualified Civil Engineers with an excellent understanding about the Fastening Technology are geared to provide.

- ✓ Seminars at various Consultants, Specifiers.
- ✓ Specifications of the Anchoring Products.
- ✓ Solutions for various critical site applications.
- ✓ Complete Design report on the Anchor Fasteners.
- ✓ Tailor made Design to critical applications.
- ✓ Conducting On-site Testing to ensure the installed anchors are yielding the design loads.
- ✓ Technical Documentations for approvals etc.



### Sales Support

Our Sales Engineering Team are well qualified Engineers with an excellent technical background and understanding about the Fastening & Demolition Technology are geared to provide.

- ✓ Visiting the Jobsite.
- ✓ Understand the needs.
- ✓ Recommend.
- ✓ Brochures, Catalogues.
- ✓ Demonstrations at site.
- ✓ Seminars, presentations.
- ✓ On-site training to the application team.
- ✓ Delivery of the products etc.



### Customer Services

Our Customer Service Team who are well trained in providing necessary support in

- ✓ Providing Quotations, Pricing Structures.
- ✓ Follow-up with the Purchase orders.
- ✓ Processing the Purchase orders.
- ✓ Communication to the Customers on the process of execution of Purchase Orders.
- ✓ Account Reconciliations, Payment Follow-ups.
- ✓ Vendor Registrations.
- ✓ Provide documentation to our customers.
- ✓ Communication with our Sales/Technical team to address Customer needs.
- ✓ Handling customer complaints, communication etc.



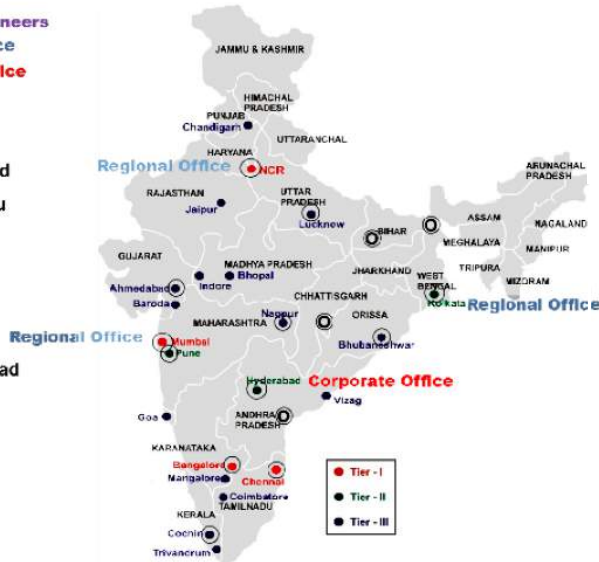
### After Sales Services

Our Service Team for providing necessary support in managing & maintaining the Power Tools are geared to support our esteemed customers in

- ✓ Providing the Repair Services for the Equipment sold in the market.
- ✓ Providing necessary Spare Parts, drawings to the customers in case of self-maintenance by the customers.
- ✓ Visiting job sites and providing necessary Service Check for the tools supplied.
- ✓ Warranty reports for the customers.
- ✓ Communication of maintenance
- ✓ Providing Service training to the customers who wish to repair own tools themselves etc.

- Resident Engineers
- Regional Office
- Corporate Office

1. Hyderabad
2. Bengaluru
3. Chennai
4. Kochi
5. Mumbai
6. Pune
7. Ahmadabad
8. Nagpur



9. Delhi
10. Lucknow
11. Bhubaneswar
12. Raigarh
13. Jamshedpur
14. Kolkata
15. Patna
16. Siliguri

## Approved & Serving Metro Rail Projects in India



## Serving Manufacturing Industries in India







[www.rippleindia.in](http://www.rippleindia.in)



New Delhi | Mumbai | Pune | Kolkata | Bengaluru | Chennai | Vishakhapatnam  
Lucknow | Ahmedabad | Nagpur | Patna | Bhubaneswar | Kochi



### **Ripple Construction Products Pvt Ltd**

Corp Office: 303 & 403, Royal Arcadia, S.R. Nagar, Hyderabad - 500 038, India

Tel: +91 40 4004 0707 Fax: +91 40 4004 0686

Email: [marketing@rippleindia.in](mailto:marketing@rippleindia.in) | [www.rippleindia.in](http://www.rippleindia.in)



Whatsapp: +91 770 222 5500