

# FM-744<sup>®</sup>

Heavy Duty Sheild Anchor

## Metal Sheild Anchor



The ideal solution for restoration work.



**SINGLE SHELL BODY**  
Higher resistance due to the single piece body



**ANTIROTATION**  
Four lugs prevent rotation in the hole

**SELF-CENTRING**  
Exclusive cone containing system



since 1966

CERTIFICATION OF QUALITY MANAGEMENT SYSTEM  
ISO 9001 Cert. n° 1085

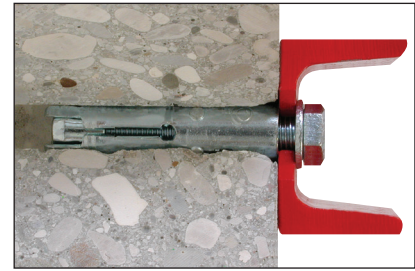
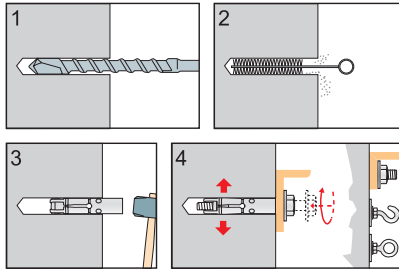


CERTIFICATION OF ENVIRONMENTAL MANAGEMENT SYSTEM  
ISO 14001 Cert. n° 0050A



## ▶ FM-744<sup>®</sup> Heavy duty shield anchor - four segments

- concrete
- solid brick
- solid stone



**Anchor only**  
white zinc plated

Code	Plug	For screw	Box q.ty	Pkg.
74400b10040	10x40	M6	50	500
74400b14050	14x50	M8	50	500
74400b16060	16x60	M10	25	250
74400b20080	20x80	M12	20	200



**Hex head screw grade 8.8**  
white zinc plated

Code	Plug	Hex head screw	Box q.ty	Pkg.
74411b10040	10x40	M6x50	50	500
74411b14050	14x50	M8x60	50	500
74411b16060	16x60	M10x80	25	250
74411b20080	20x80	M12x90	20	200



**Threaded bar grade 5.8**  
white zinc plated

Code	Plug	Bar	Box q.ty	Pkg.
74412b10040	10x40	M6x65	50	500
74412b14050	14x50	M8x75	50	500
74412b16060	16x60	M10x95	25	250
74412b20080	20x80	M12x115	20	200



**Forged cup hook**  
white zinc plated

Code	Plug	Cup hook	Ø int. cup hook	Box q.ty	Pkg.
74413b10040	10x40	M6	9.5	50	500
74413b14050	14x50	M8	11	50	500
74413b16060	16x60	M10	14	25	250
74413b20080	20x80	M12	16	20	200



**Forged eye**  
white zinc plated

Code	Plug	Eye	Ø int. eye	Box q.ty	Pkg.
74414b10040	10x40	M6	10	50	500
74414b14050	14x50	M8	11.5	50	500
74414b16060	16x60	M10	14.5	25	250
74414b20080	20x80	M12	17	20	200