

ripple **friulsider**



Heavy Duty Metal Anchoring System

1. **ATS Evo**
2. **FM 753 Crack**
3. **FM 753**

FM-753[®] CRACK

HEAVY DUTY THROUGH ANCHOR FOR CRACKED CONCRETE



ETA 09/0056 op.1
ETA 10/0293 op.1

OPTION 1

The specialist for cracked concrete.



SOLID EXPANSION

Stainless steel clip with innovative design



HIGH RESISTANCE

Hardened and tempered anchor body with special high resistance zinc plating

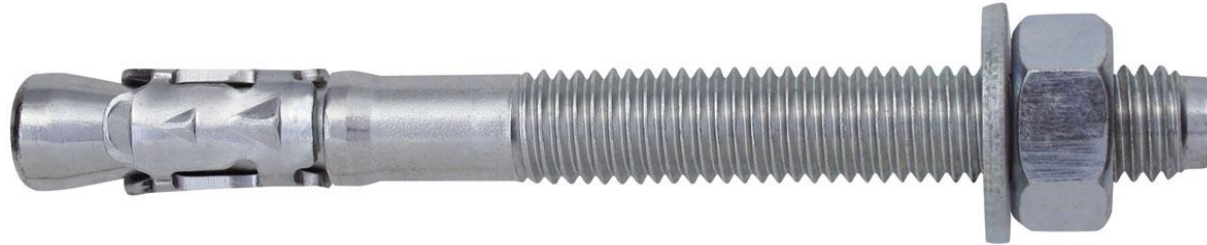
GREATER STABILITY

Nine gripping dents for adhesion to hole walls



FM-753[®] CRACK

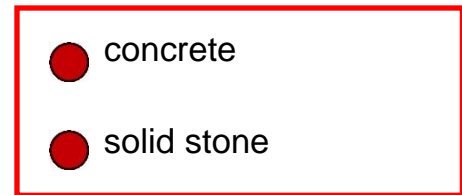
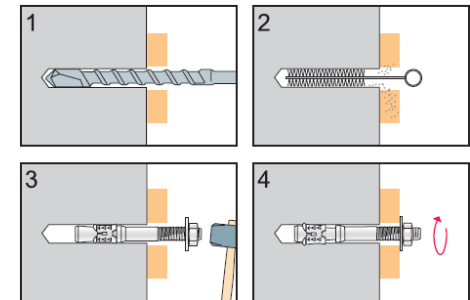
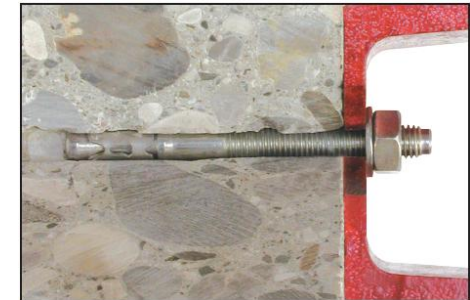
HEAVY DUTY THROUGH ANCHOR FOR CRACKED CONCRETE



ETA 09/0056 op.1
ETA 10/0293 op.1

VERSIONS:

- High resistance white zinc plating (more than 1000 hours in salt spray test);
- Stainless Steel A4 (SS 316).
- **HARDENED AND TEMPERED** steel grade 9.8 anchor body.
- **STAINLESS STEEL** expander clip.
- **INCREASED THICKNESS** of three expander segments.
- **NINE GRIPPING DENTS** for greater adhesion to hole walls.



FM-753[®] CRACK

HEAVY DUTY THROUGH ANCHOR FOR CRACKED CONCRETE



ETA 09/0056 op.1
ETA 10/0293 op.1

Assembled

Hardened and tempered anchor body

High resistance white zinc plating with more than 1000 hours in salt spray test

Stainless steel A4 clip

Monté

Tige bonifiée

Zingué blanc haute résistance testé plus de 1000h en brillard salin

Bague acier inoxydable A4



Code	Dimension Ø x L	Thread length Longueur filet	Fixing thickness Epaiss. fixable max	Box q.ty Boîte de	Pkg. Cond.
75350b08068	M8x68	30	4	100	800
75350b08075	M8x75	30	10	100	800
75350b08090	M8x90	40	25	100	500
75350b08115	M8x115	60	50	100	500
75350b08135	M8x135	80	70	100	500
75350b08165	M8x165	80	100	50	250
75350b10090	M10x90	40	10	50	400
75350b10105	M10x105	55	25	50	250
75350b10115	M10x115	55	35	50	250
75350b10135	M10x135	85	55	50	250
75350b10155	M10x155	85	75	50	125
75350b10185	M10x185	85	105	25	125
75350b12110	M12x110	65	10	50	250
75350b12120	M12x120	65	20	50	250
75350b12145	M12x145	85	45	25	200
75350b12170	M12x170	85	70	25	125
75350b12200	M12x200	85	100	25	125
75350b16130	M16x130	65	10	20	120
75350b16150	M16x150	85	30	20	100
75350b16185	M16x185	85	60	20	80
75350b16220	M16x220	85	100	15	90

FM-753[®] CRACK

HEAVY DUTY THROUGH ANCHOR FOR CRACKED CONCRETE

Assembled
stainless steel A4

Monté
inox A4



ETA 09/0056 op.1
ETA 10/0293 op.1



Code	Dimension Ø x L	Thread length Longueur filet	Fixing thickness Epaiss. fixable max	Box q.ty Boîte de	Pkg. Cond.
75350008068	M8x68	30	4	100	800
75350008075	M8x75	30	10	100	800
75350008090	M8x90	40	25	100	500
75350008115	M8x115	60	50	100	500
75350008135	M8x135	80	70	100	500
75350008165	M8x165	80	100	50	250
75350010090	M10x90	40	10	50	400
75350010105	M10x105	55	25	50	250
75350010115	M10x115	55	35	50	250
75350010135	M10x135	85	55	50	250
75350010155	M10x155	85	75	50	125
75350010185	M10x185	85	105	25	125
75350012110	M12x110	65	10	50	250
75350012120	M12x120	65	20	50	250
75350012145	M12x145	85	45	25	200
75350012170	M12x170	85	70	25	125
75350012200	M12x200	85	100	25	125
75350016130	M16x130	65	10	20	120
75350016150	M16x150	85	30	20	100
75350016185	M16x185	85	60	20	80
75350016220	M16x220	85	100	15	90

