

**ripple** **friulsider**



## Medium Heavy Duty Metal Anchors

**1. FM MP 3 Evo**

**2. FM 744**

# FM-MP3® EVO

## MEDIUM HEAVY DUTY ANCHOR – THREE SEGMENTS

The first and only  
UNIVERSAL METAL  
anchor.

Works correctly also  
on hollow base  
materials.



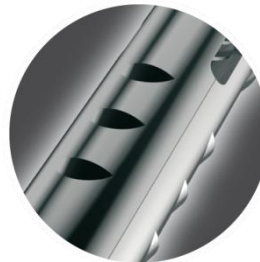
### CE EUROPEAN CERTIFICATIONS

- **CE certification according to ETAG001 part 6: for use on cracked and non-cracked concrete.**
- **CE certification option 7 for Stainless steel A4: only anchor in its category.**
- **Certification for loads exposed to fire up to R120 (120 minutes).**



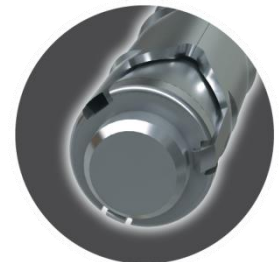
### SINGLE SHELL BODY

**LONG version: the only through anchor composed of a steel monolithic body. Greater shear resistance. Greater stability of fixed piece.**



### CORRECT INSTALLATION IN CRITICAL CONDITIONS

**Reduced edge and spacing distances than those of other anchors in its field**



# FM-MP3® EVO

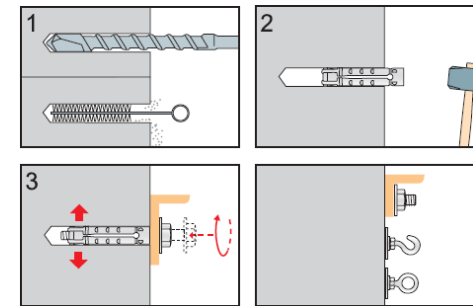
## MEDIUM HEAVY DUTY ANCHOR – THREE SEGMENTS



### VERSIONS:

- Hex head screw-threaded bar-hook-eye;
- white zinc plated / stainless steel A4.
- **SINGLE SHELL BODY:** rigid monolithic body, an even easier application.
- **VERSATILE:** optimal expansion both on solid and hollow base materials.
- **SELF-CENTRING:** exclusive co-axial cone containing system.

**CERTIFIED CE – opt. 7 and ETAG001 part 6**



- concrete
- solid brick
- honeycomb brick
- cell like clay brick
- light weight honeycomb brick
- hollow dense aggregate block
- hollow light aggregate block
- solid stone



ETA 09/0067 op.7 ETA 10/0074  
ETA 09/0357 op.7 ETAG 001 part 6





# FM-MP3® EVO

## MEDIUM HEAVY DUTY ANCHOR – THREE SEGMENTS



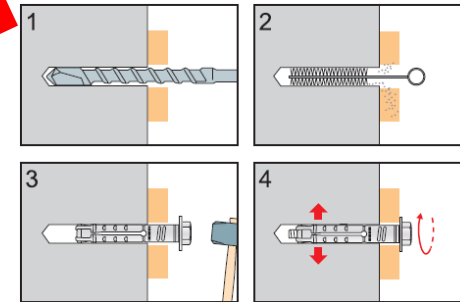
**THROUGH  
FIXING**

### VERSIONS:

- with hex head screw;
- with anti-intrusion screw;
- with hex socket countersunk head screw.

- **SINGLE SHELL BODY:** rigid monolithic body, an even easier application.
- **VERSATILE:** optimal expansion both on solid and partially hollow base materials.
- **SELF-CENTRING:** exclusive co-axial cone containing system.

**CERTIFIED CE – opt. 7 and ETAG001 part 6**



- concrete
- solid brick
- honeycomb brick
- cell like clay brick
- light weight honeycomb brick
- hollow dense aggregate block
- hollow light aggregate block
- solid stone



ETA 09/0067 op.7 ETA 10/0074  
ETA 09/0357 op.7 ETAG 001 part 6



# FM-MP3® EVO

## MEDIUM HEAVY DUTY ANCHOR – THREE SEGMENTS

Anchor only  
white zinc plated

*Cheville seulement  
zingué blanc*



Code	Plug Cheville Ø x L	For screw Pour vis	Box q.ty Boîte de	Pkg. Cond.
73300b10045	10x45	M6	50	500
73300b12050	12x50	M8	50	500
73300b15060	15x60	M10	25	250
73300b18080	18x80	M12	20	200



Hex head screw grade 8.8\*  
white zinc plated

*Vis T.H. classe 8.8\*  
zingué blanc*

Code	Plug Cheville Ø x L	Hex head screw Vis T.H. Ø x L	Box q.ty Boîte de	Pkg. Cond.
73301b10045	10x45	M6x50	50	500
73301b12050	12x50	M8x60	50	500
73301b15060	15x60	M10x80	25	250
73301b18080	18x80	M12x100	20	200

\*Available with large washer upon request. For information contact the Export office.

*\*Disponible avec rondelle large sur demande. Pour tous renseignements veuillez contacter le Service Export.*



Threaded bar grade 5.8  
white zinc plated

*Tige filetée classe 5.8  
zingué blanc*

Code	Plug Cheville Ø x L	Bar Tige Ø x L	Box q.ty Boîte de	Pkg. Cond.
73302b10045	10x45	M6x65	50	500
73302b12050	12x50	M8x75	50	500
73302b15060	15x60	M10x95	25	250
73302b18080	18x80	M12x115	20	200



ETA 09/0067 op.7 ETA 10/0074  
ETA 09/0357 op.7 ETAG 001 part 6



# FM-MP3® EVO

## MEDIUM HEAVY DUTY ANCHOR – THREE SEGMENTS



Forged cup hook  
white zinc plated

*Crochet forgé  
zingué blanc*

Code	Plug Cheville Ø x L	Cup hook Crochet	Ø int. cup hook Ø int. crochet	Box q.ty Boîte de	Pkg. Cond.
73303b10045	10x45	M6	9,5	50	500
73303b12050	12x50	M8	11	50	500
73303b15060	15x60	M10	14	25	250
73303b18080	18x80	M12	16	20	200



Forged eye  
white zinc plated

*Piton forgé  
zingué blanc*

Code	Plug Cheville Ø x L	Eye Piton	Ø int. eye Ø int. piton	Box q.ty Boîte de	Pkg. Cond.
73304b10045	10x45	M6	10	50	500
73304b12050	12x50	M8	11,5	50	500
73304b15060	15x60	M10	14,5	25	250
73304b18080	18x80	M12	17	20	200



ETA 09/0067 op.7 ETA 10/0074  
ETA 09/0357 op.7 ETAG 001 part 6



# FM-MP3® EVO

## MEDIUM HEAVY DUTY ANCHOR – THREE SEGMENTS



Anchor only  
stainless steel A4

*Cheville seulement  
inox A4*

Code	Plug Cheville Ø x L	For screw Pour vis	Box q.ty Boîte de	Pkg. Cond.
73300010045	10x45	M6	50	500
73300012050	12x50	M8	50	500
73300015060	15x60	M10	25	250
73300018080	18x80	M12	20	200



Hex head screw  
stainless steel A4

*Vis T.H.  
inox A4*

Code	Plug Cheville Ø x L	Hex head screw Vis T.H. Ø x L	Box q.ty Boîte de	Pkg. Cond.
73301010045	10x45	M6x50	50	500
73301012050	12x50	M8x60	50	500
73301015060	15x60	M10x80	25	250
73301018080	18x80	M12x100	20	200



ETA 09/0067 op.7 ETA 10/0074  
ETA 09/0357 op.7 ETAG 001 part 6





# FM-MP3® EVO

## MEDIUM HEAVY DUTY ANCHOR – THREE SEGMENTS



Hex head screw grade 8.8  
white zinc plated

*Vis T.H. classe 8.8  
zingué blanc*

Code	Plug Cheville Ø x L	Hex head screw Vis T.H. Ø x L	Fixing thickness Epaiss. fixable max	Box q.ty Boîte de	Pkg. Cond.
73310b10070	10x70	M6x70	25	50	500
73310b12075	12x75	M8x80	25	50	500
73310b15085	15x85	M10x90	25	25	250
73310b18105	18x105	M12x110	25	20	200



Hex socket countersunk head screw grade 8.8  
white zinc plated

*Vis avec tête fraisée à six pans classe 8.8  
zingué blanc*

Code	Plug Cheville Ø x L	Screw Vis Ø x L	Fixing thickness Epaiss. fixable max	Box q.ty Boîte de	Wrench S/plat	Pkg. Cond.
73311b10070	10x70	M6x75	30	50	5	500
73311b12075	12x75	M8x80	30	50	6	500
73311b15085	15x85	M10x90	30	25	8	250
73311b18105	18x105	M12x110	30	20	10	200



ETA 09/0067 op.7 ETA 10/0074  
ETA 09/0357 op.7 ETAG 001 part 6



