

**ripple** **friulsider**



## Medium Duty Metal Anchors

1. TDS – Shallow anchor
2. TSA PATTEN – Sleeve Anchor
3. TAP – Drop in Anchor
4. CLK – Screw Anchor
5. VF/VS/VDS – Screw Anchor

**Thin walled through fixing suitable for all medium-heavy duty applications.**



### **VARIOUS APPLICATIONS**

**Wide range of applications from wall plates, garage doors, hand rails, signs etc.**

### **UNIFORM EXPANSION**

**Ensured by the three expanding segments made out of a single pressed steel body.**

### **COLLAPSE FEATURE**

**Special shaped slots on the three expanding segments pull down gaps between the fixture and base material**

# TSA-PATTEN®

## METAL SLEEVE ANCHOR



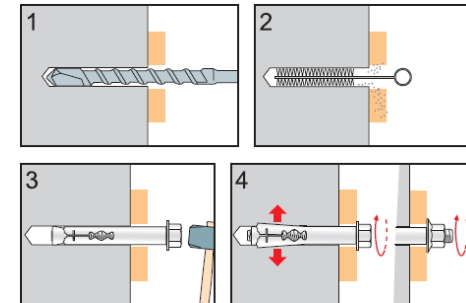
THROUGH  
FIXING

### VERSIONS:

- flanged nut;
- hex head screw.

- **FLANGED NUT:** threaded stud with integral cone end, expansion sleeve and flanged nut.

- **HEX HEAD SCREW CL. 8.9:** expansion sleeve with knurled threaded expander cone and washer.



- concrete
- solid brick
- solid stone

# TSA-PATTEN®

## METAL SLEEVE ANCHOR



Flanged nut  
white zinc plated

*Ecrou embouti  
zingué blanc*

Code	Type	Plug Cheville Ø x L	Thread Filetage	Fixing thickness Epaiss. fixable max	Box q.ty Boîte de
79600b08040	TSA 8/05	8x40	M6	5	100
79600b08065	TSA 8/30	8x65	M6	30	50
79600b10050	TSA 10/10	10x50	M8	10	50
79600b10077	TSA 10/37	10x77	M8	37	50
79600b10097	TSA 10/57	10x97	M8	57	25
79600b12075	TSA 12/25	12x75	M10	25	25
79600b12099	TSA 12/49	12x99	M10	49	20
79600b12129	TSA 12/79	12x129	M10	79	20
79600b16065	TSA 16/10	16x65	M12	10	20
79600b16111	TSA 16/56	16x111	M12	56	10
79600b16147	TSA 16/92	16x147	M12	92	10



# TSA-PATTEN®

## METAL SLEEVE ANCHOR



Hex head screw grade 8.8  
white zinc plated

*Vis T.H. classe 8.8  
zingué blanc*

Code	Type	Plug Cheville Ø x L	Screw Vis	Fixing thickness Epaiss. fixable max	Box q.ty Boîte de
79602b08045	TSA 8/08	8x45	M6	8	100
79602b08060	TSA 8/23	8x60	M6	23	100
79602b10060	TSA 10/15	10x60	M8	15	50
79602b10080	TSA 10/35	10x80	M8	35	50
79602b10100	TSA 10/55	10x100	M8	55	25
79602b12070	TSA 12/17	12x70	M10	17	50
79602b12100	TSA 12/47	12x100	M10	47	25
79602b12130	TSA 12/77	12x130	M10	77	20
79602b16070	TSA 16/03	16x70	M12	3	10
79602b16110	TSA 16/40	16x110	M12	40	10
79602b16150	TSA 16/80	16x150	M12	80	5

