

**ripple** **friulsider**

# TSA

Metal Sleeve Anchor

## For medium duty applications



**HEX. HEAD SCREW**  
8.8 grade White Zinc  
Plated Screw



**SLEEVE EXPANSION**  
Torque controlled expansion

**SHALLOW EMBEDMENT DEPTH**  
Less risk of hitting reinforcement



**AVAILABLE IN:**



White Zinc Plated

**friulsider**

since 1966

CERTIFICATION OF QUALITY MANAGEMENT SYSTEM  
ISO 9001 Cert. n° 1085

CERTIFICATION OF ENVIRONMENTAL MANAGEMENT SYSTEM  
ISO 14001 Cert. n° 0050A



# TSA-PATTEN

## Metal Sleeve Anchor

### VERSIONS:

- White Zinc Plated Flanged Nut Anchor
- White Zinc Plated Hex Head Anchor Grade 8.8

### FEATURES

- Fully Assembled
- Through Fixing
- Depth of embedment

### ADVANTAGES

- Ready to use
- Universal applications
- Shallow drilling depth

### BASE MATERIALS:

- Concrete
- Solid Stone
- Solid Brick

### APPLICATIONS:

- Medium duty steel constructions
- Profiles
- Radiators
- Signs
- Satellite Dish
- Shutters
- Angle Iron
- Stadium seating
- Wall plates
- Porches
- Garage Doors
- Cable trays
- Hand rails and supports
- Pipe lines and ventilations

- Suitable Application
- Partially Suitable Application

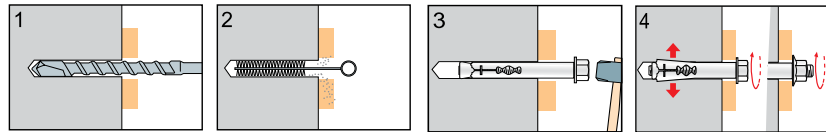


## TSA-PATTEN

Flanged nut  
White Zinc Plated



### Installation Procedure



Code	Type	Plug Ø x L	Thread	Fixing thickness max	Box q.ty
79600b08040	TSA 8/05	8x40	M6	5	100
79600b08065	TSA 8/30	8x65	M6	30	50
79600b10050	TSA 10/10	10x50	M8	10	50
79600b10077	TSA 10/37	10x77	M8	37	50
79600b10097	TSA 10/57	10x97	M8	57	25
79600b12075	TSA 12/25	12x75	M10	25	25
79600b12099	TSA 12/49	12x99	M10	49	20
79600b12129	TSA 12/79	12x129	M10	79	20
79600b16065	TSA 16/10	16x65	M12	10	20
79600b16111	TSA 16/56	16x111	M12	56	10
79600b16147	TSA 16/92	16x147	M12	92	10

## TSA-PATTEN

Hex head screw Grade 8.8  
White Zinc Plated



Code	Type	Plug Ø x L	Screw V/s	Fixing thickness max	Box q.ty
79602b08045	TSA 8/08	8x45	M6	8	100
79602b08060	TSA 8/23	8x60	M6	23	100
79602b08080	TSA 8/43	8x80	M6	43	50
79602b08100	TSA 8/63	8x100	M6	63	50
79602b10060	TSA 10/15	10x60	M8	15	50
79602b10080	TSA 10/35	10x80	M8	35	50
79602b10100	TSA 10/55	10x100	M8	55	25
79602b10120	TSA 10/75	10x120	M8	75	20
79602b10140	TSA 10/95	10x140	M8	95	20
79602b12070	TSA 12/17	12x70	M10	17	50
79602b12100	TSA 12/47	12x100	M10	47	25
79602b12130	TSA 12/77	12x130	M10	77	20
79602b16070	TSA 16/03	16x70	M12	3	10
79602b16110	TSA 16/40	16x110	M12	40	10
79602b16150	TSA 16/80	16x150	M12	80	5